



Advanced Screening Technology  
Vibrating Equipment

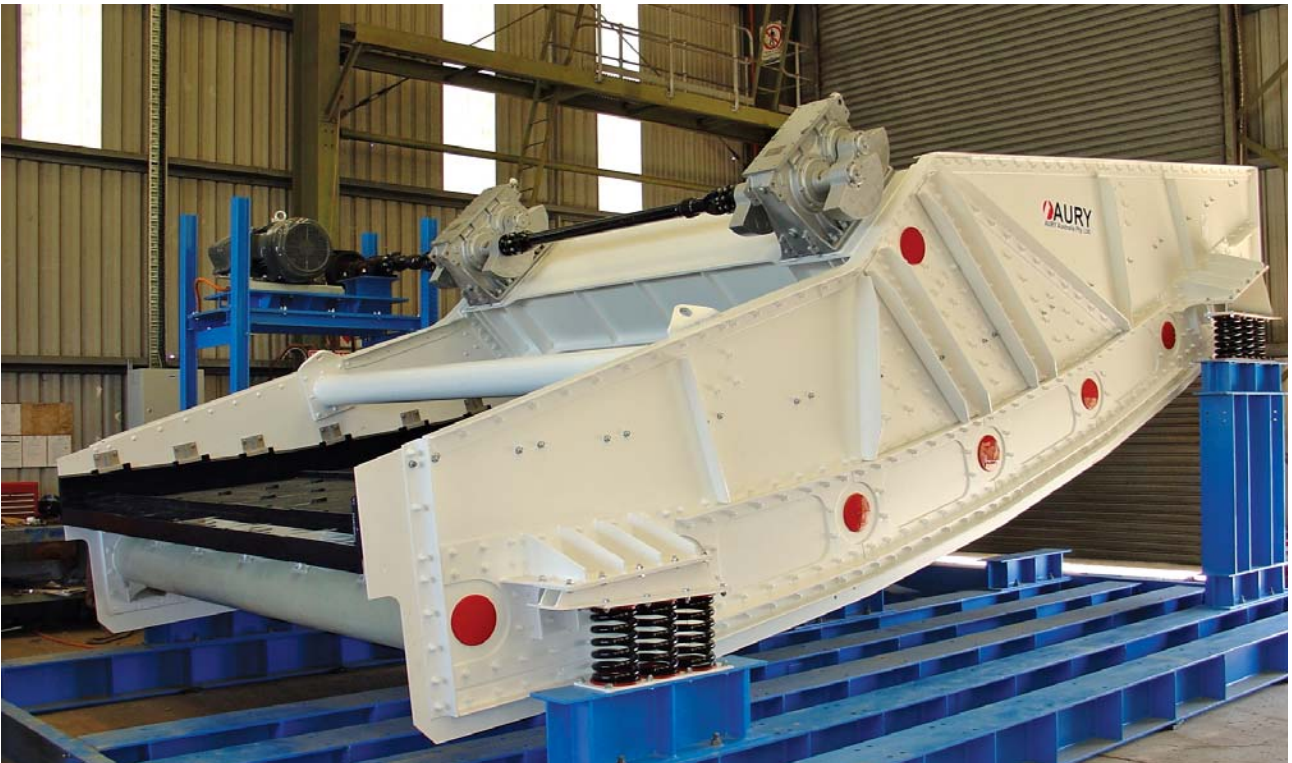


## AURY AUSTRALIA

Aury Australia Pty. Ltd. is an Australian company with its head office and manufacturing facility in Yatala, Brisbane, Queensland Australia. Aury Australia is also a major shareholder in Aury Africa Ltd based in Johannesburg South Africa. Aury Australia also has partners in Ukraine, Russia, Kazakhstan, India, and is expanding its operations Worldwide.

Aury Australia staff have over 60 years combined Vibrating Screen experience in Australia and overseas. Our personnel have working closely with Mining Companies for many years to develop field proven Vibrating Equipment. What we have learnt from our field experience in process plants we have applied to our screen designs to create a screen product that will perform reliably over many years in all mineral processing applications.





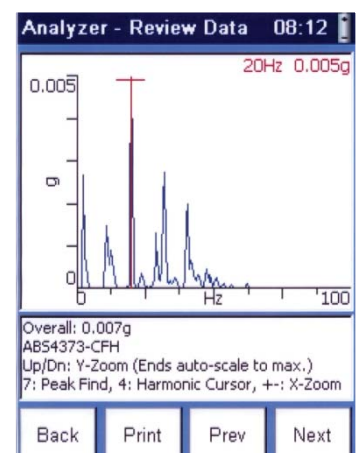
## SAFETY

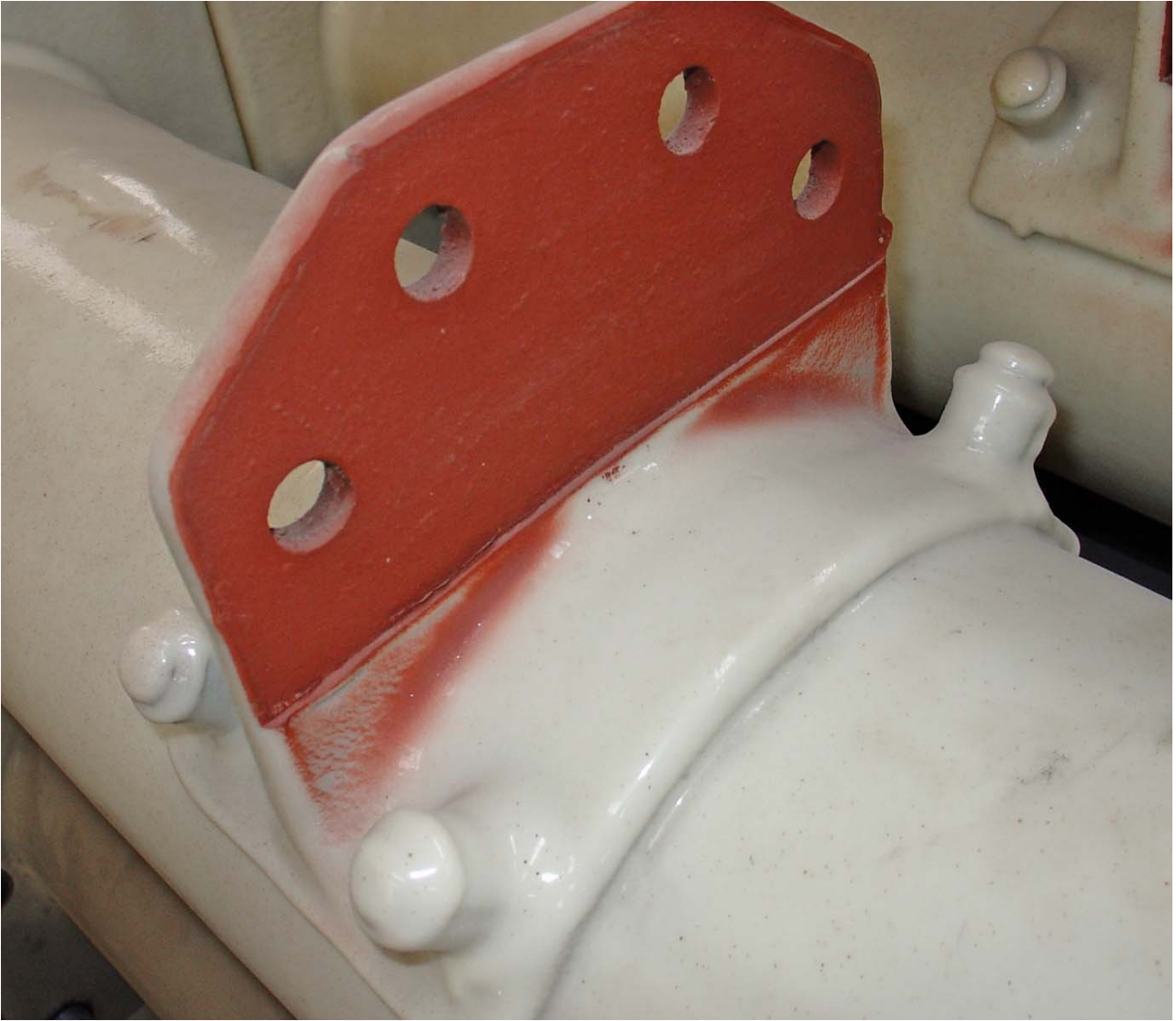
Aury Australia management and staff are totally committed to safety and providing a safe working environment for all personnel. Our equipment is designed to meet or exceed all statutory safety requirements, and our personnel are trained and developed in a culture of safe working practices and processes. We strive for constant improvement in personnel safety, and the development of safer equipment, work processes, work culture and procedures.

## COMPREHENSIVE SCREEN TESTING

After assembly is complete, every Aury screen is then comprehensively tested in house on our specifically designed test stand using sophisticated frequency measurement equipment. Both static bump tests and dynamic frequency tests during screen operation are conducted to determine screen structure natural frequencies and operational characteristics.

Screen test results are then compared against Aury standards and any necessary adjustments are performed in house prior to screen delivery. Dynamic screen tests are also performed on site during commissioning. All screen test data is recorded and safely stored for future reference.





## **AURY SCREEN QUALITY**

Aury incorporates Quality into everything we do – from design and manufacture, right through to assembly and testing of the final product. Our Group Company operates many process plants which utilise our screens, so we understand the importance of “getting it right the first time, every time”. Our commitment to our customers is to only offer the highest quality and most reliable process equipment worldwide.

All screen components are manufactured and inspected to ensure they meet our exacting quality standards so that the finished screens perform perfectly in service in the harsh conditions experienced within the coal and minerals processing industries. This approach has elevated Aury to become a respected and proven supplier of high quality screening equipment.

Aury constantly improves designs and we have applied what we have learnt in the field to ensure our screens are able to exceed the process and reliability demands found in modern process plants. Continuous product improvement ensures Aury maintains its reputation as quality supplier of screening equipment to the mining industry worldwide.

## AURY SCREEN TECHNOLOGY

Aury Screens incorporate a number of unique and proven design features, which lower power consumption, improve screen service life, and increase screening efficiency. Areas of screens that traditionally fail have received extensive R&D to improve screen service life. Examples of this include specially developed cross beams, and deck rail mounting cleats which are cast steel, machined to mate to the circular cross beams, and then are HUCK bolted onto the cross beam. This technology improves service life of cross beams by eliminating induced stresses caused by the welding of deck rail support cleats to cross beams, while also facilitating the easy replacement of deck rail support cleats.

Crossbeams and cleats are sprayed with two layers of high quality Australian made Polyurethane to a final thickness of 6mm, providing high abrasion and corrosion resistance for the life of the screen.

Our screen Exciter Beams have been designed with the aid of Finite Element Analysis software to reduce stresses in critical areas, ensuring long trouble free service life. Aury Exciters are manufactured and quality tested exclusively in house, utilising only the most modern manufacturing process and CNC machining equipment. Aury exciter components are subjected to a number of robotic and manual quality inspections before being accepted for final assembly. Completed exciters are then run for 24 hours minimum, while constantly being monitored for individual bearing and oil temperatures.

Aury screens are not only innovative, and efficient, their design is underpinned by proven and reliable engineering practices, which ultimately produce a product that will operate efficiently and reliably for many years.

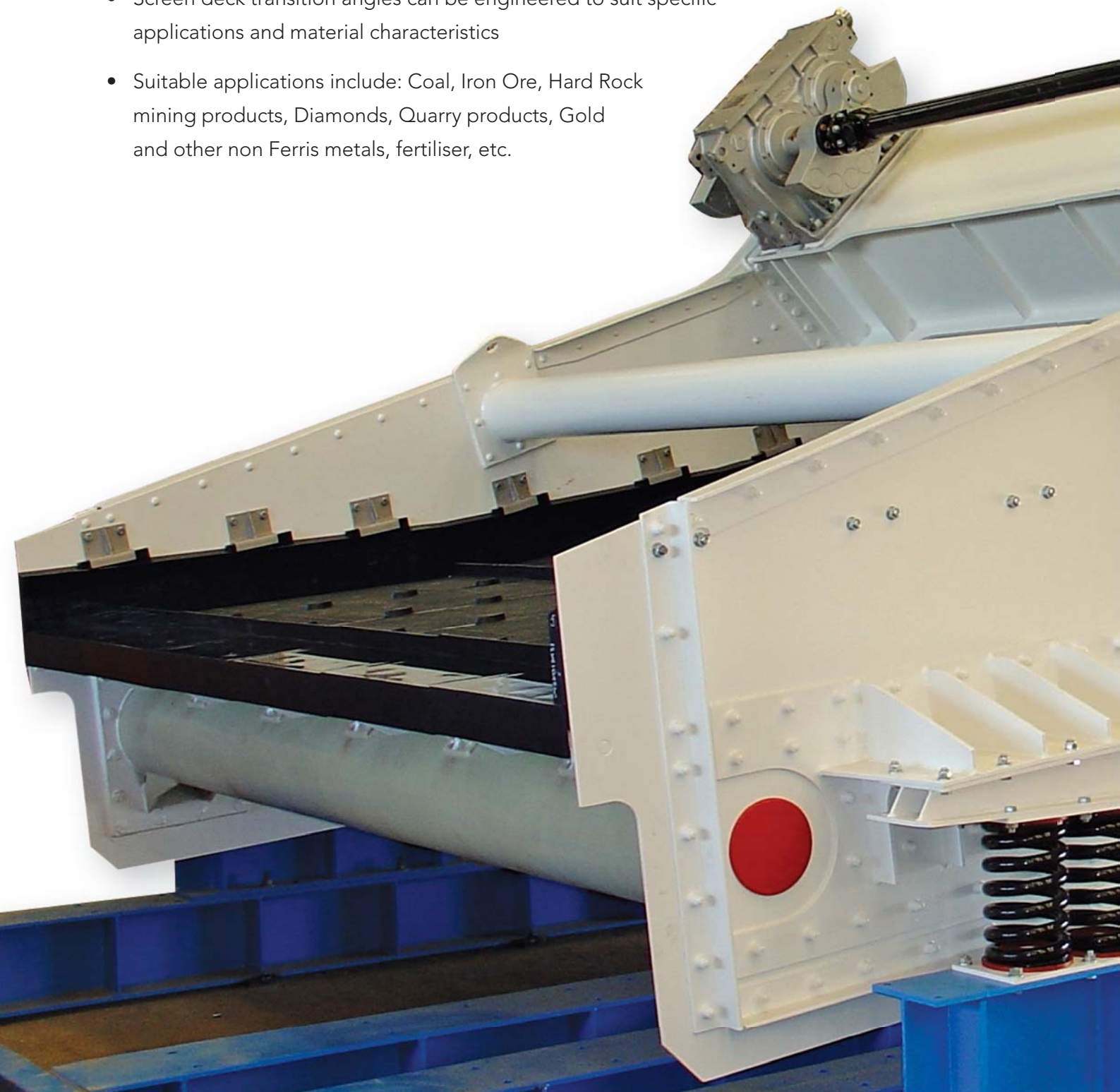


## **"ABS" BANANA SCREENS**

The Aury Australia range of Banana screens have been developed and designed to operate efficiently in very demanding coal and minerals processing environments and applications.

Aury Australia Banana Screens Feature:

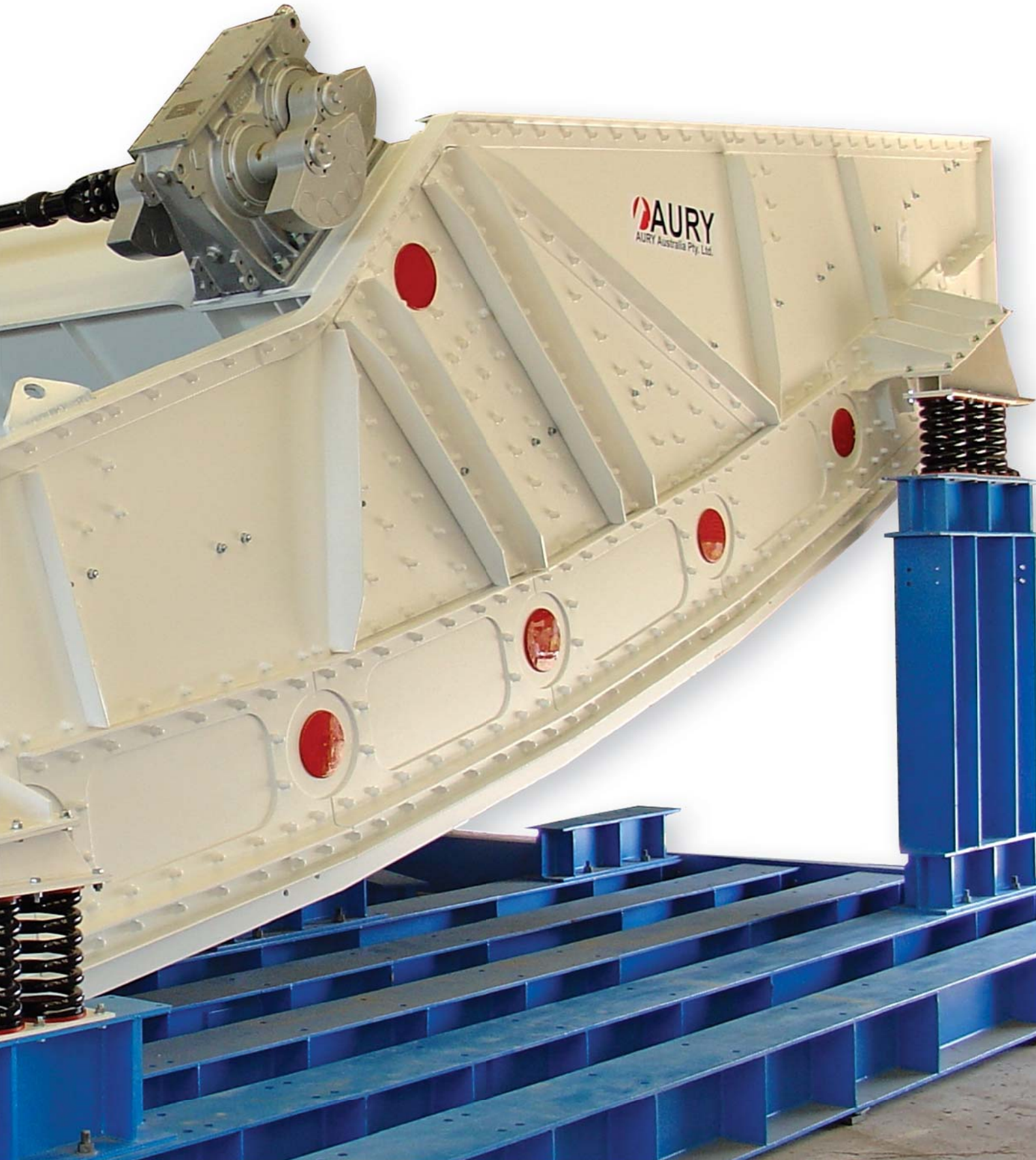
- Full range of efficient reliable Banana screens for all screening applications
- Single and double deck models available
- Screen mounting supports can be altered to suit most existing screen footprints
- Screen mounting angle can be designed to suit specific screening applications
- Screen deck transition angles can be engineered to suit specific applications and material characteristics
- Suitable applications include: Coal, Iron Ore, Hard Rock mining products, Diamonds, Quarry products, Gold and other non Ferris metals, fertiliser, etc.

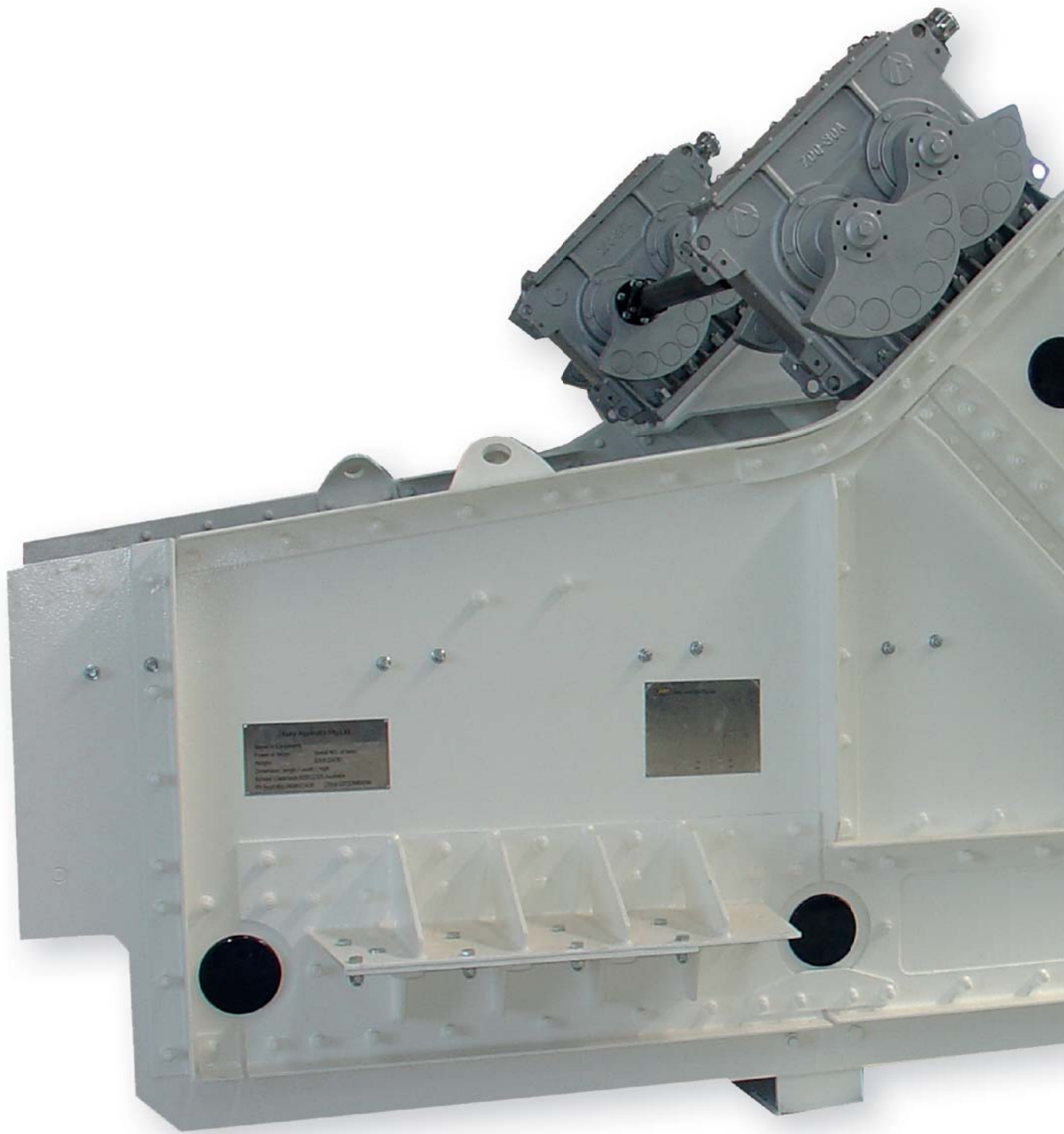


## **"ABS" BANANA SCREEN MODELS**

The Aury ABS range of Banana Screens are available in Single and Double Deck configurations and can be fitted with any Modular deck system, including the Weide Modular Deck system exclusively sold by Aury Australia.

The Screens size range from 1.2 metres to 4.9 metres wide and 2.4 metres to 9.5 metres in length (Dimensions refer to the actual useable screening deck area).





## **"AHS" HORIZONTAL SCREENS**

The Aury Australia range of Horizontal screens have been developed and designed to operate efficiently in very demanding coal and minerals processing environments and applications.

Aury Australia Horizontal Screens Feature:

- Full range of efficient reliable horizontal screens for all screening applications
- Single and double deck models available
- Screen mounting supports can be altered to suit most existing screen footprints
- Screen mounting angle can be designed to suit specific screening applications
- Suitable applications include: Coal, Iron Ore, Hard Rock mining products, Diamonds, Quarry products, Gold and other non Ferris metals, fertiliser, etc.





## **"AHS" HORIZONTAL SCREEN MODELS**

The Aury AHS Horizontal Screen models are available in Single and Double Deck configurations and can be fitted with any of the existing Modular deck systems including the Weide Modular Deck system exclusively sold by Aury Australia.

The Screens size range from 1.2 metres to 4.9 metres wide and 2.4 metres to 9.5 metres in length of total screening deck area.

## **"AHF" HIGH FREQUENCY DEWATERING SCREENS**

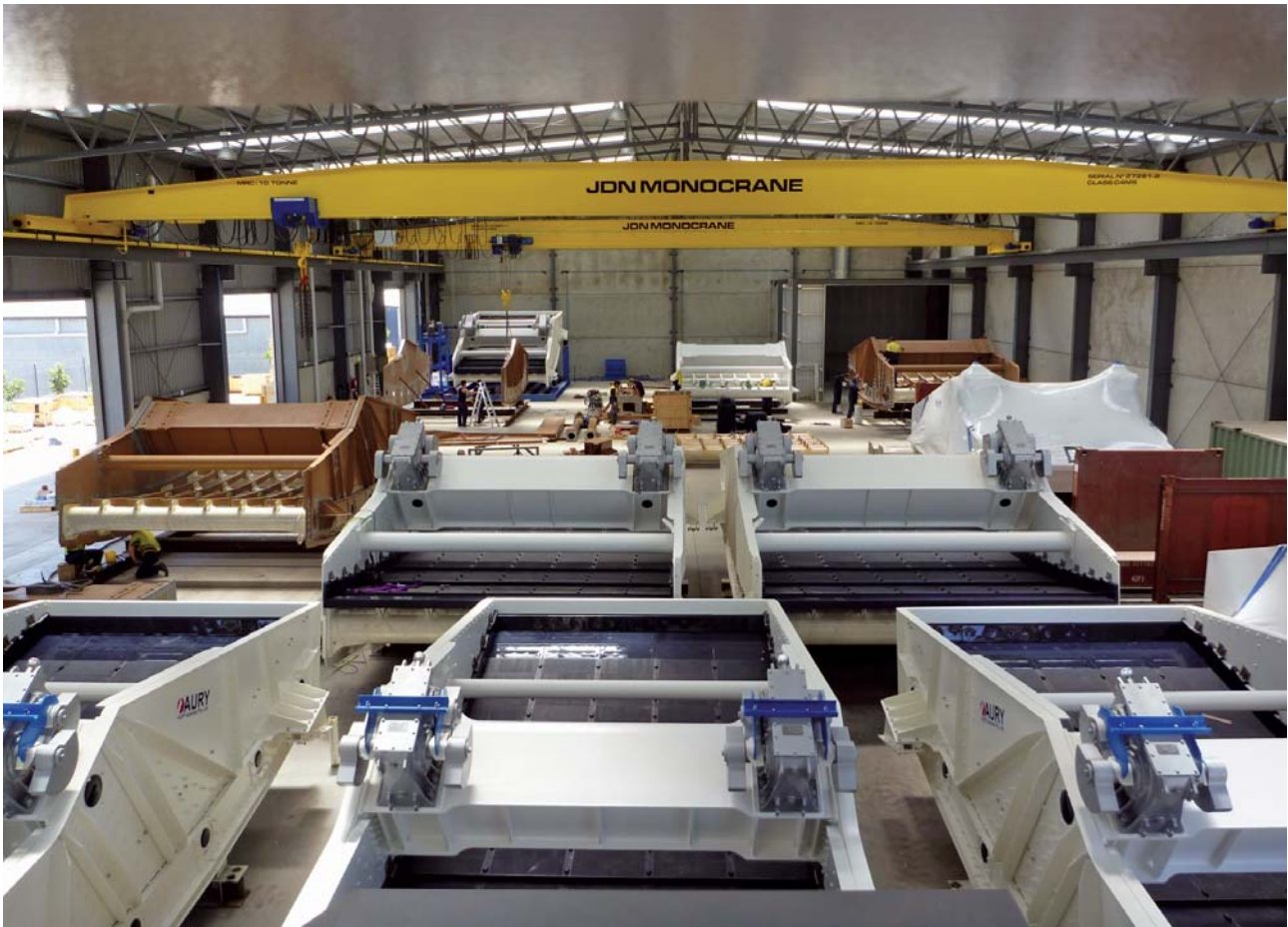
Aury Australia range of High Frequency Dewatering Screens utilise twin Vibrating Motor technology to efficiently dewater a wide range of fine mineral materials, Coal, etc.

The screen sizes vary from our Model AHF-1230 (1200mm wide x 3000mm long usable deck area) right up to the Aury AHF-2448 Screen (2400mm wide x 4800mm long), which can dewater in excess of 80 tonnes per hour (fine coal). Our screens feature specially designed tubular cross beam and cleat arrangement, sprayed with two layers of Polyurethane to prevent abrasion and corrosion, ensuring long screen life.

Aury Australia AHF High Frequency Dewatering Screens Feature:

- Full range of model sizes to suit most dewatering applications
- Suitable applications include: Coal, Iron Ore, Hard Rock mining products, and other fine granular materials.





## **THE AURY ADVANTAGE**

State of the Art Design and Manufacturing Processes

Aury Screen designers have employed Finite Element Analysis of all screen components and the completed structure to ensure maximum strength and durability, while minimising unnecessary weight, creating a range of screens that require lower energy to produce a higher level of screening efficiency.

Aury Screens incorporate many unique and field proven design features, which improve screening efficiency and screen service life. Almost all Aury screen component parts are manufactured "in house" to Aury's exacting ISO 9001 quality requirements, ensuring the highest quality finished products and on time delivery.

## **FLEXIBILITY**

All Aury screens can be designed to suit our Clients differing Specifications. Aury's in house design team are able to modify our Screen designs to suit new plant design or existing plant designs and structures.

## **AFTER SALES SUPPORT**

Aury is totally committed to providing prompt and efficient after sales service and support for all of its products.



17 Telford Circuit,  
Yatala Queensland, 4207 Australia.  
(P.O. Box 935 Beenleigh, Qld., 4207)

Ph: + [61] (0)7 38077700

Fax: + [61] (0)7 33826522

Email: [sales@auryaustralia.com.au](mailto:sales@auryaustralia.com.au)  
[www. www.auryaustralia.com.au](http://www.auryaustralia.com.au)



14 Mpande Road,  
Sebenza, 1610, South Africa.

Ph: + [27] (0) 83 6572097

Fax: + [27] (0) 86 5740850

Email: [mark@auryafrica.co.za](mailto:mark@auryafrica.co.za)  
[www. www.auryafrica.co.za](http://www. www.auryafrica.co.za)



Unit 6 – 37 Shipley Drive,  
Rutherford NSW, 2320

Ph: 02 49 319 348

Fax: 02 49 321 463

Email: [sales@auryaustralia.com.au](mailto:sales@auryaustralia.com.au)  
[www. www.auryaustralia.com.au](http://www. www.auryaustralia.com.au)