



The Regal Experience



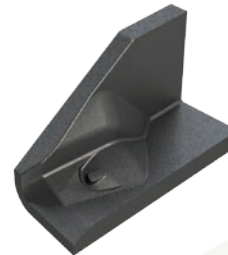
GROUND ENGAGING TOOLS

LOCKJAW UNDERGROUND

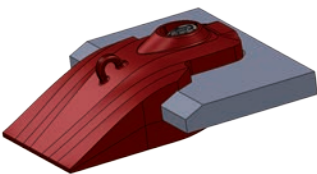
THE SAFE LOCKING SYSTEM FOR GROUND ENGAGING TOOLS HAMMERLESS ON AND HAMMERLESS OFF!

The patented Talon Lockjaw system is a safe and simple solution. A revolutionary system that actively draws and separates the Shroud from lip eliminating the need for the use of hammers to fit and remove GET!

Utilising a standard ¾ inch square drive socket, the GET is solidly secured in place by rotating the lock clockwise.



When the GET is ready to be replaced rotate the lock in the anti-clockwise direction by hand, air, or battery power impact driver. This action actively pushes the GET off the Adaptor or lip!



LIP ASSEMBLY NUMBER	LJL50X2720-680SS
GET SYSTEM	LOCKJAW
LIP THICKNESS (mm)	50
WIDTH CENTER TO CENTER (mm)	2720
DEPTH (mm)	680
LIP SPADE	SEMI SPADE
ASSEMBLY MASS (kg)	1606
LIP PLATE ONLY MASS (kg)	571

ITEM NO.	PART NUMBER	DESCRIPTION	CLASSIFICATION	QTY.
1	BSH	WELD ON ROSS	INITIAL FITMENT	7
2	LP50X230-680SS	LIP PLATE	INITIAL FITMENT	1
3	AL50X210-L5	CORNER ADAPTOR	INITIAL FITMENT	1
4	AL50X210-R5	CORNER ADAPTOR	INITIAL FITMENT	1
5	SH50X420-S	STRAIGHT SHROUD	CONSUMABLE	1
6	SH50X300-S	STRAIGHT SHROUD	CONSUMABLE	4
7	SH50X380-T	TRANSITION SHROUD	CONSUMABLE	2
8	SH50X230-L	CORNER SHROUD	CONSUMABLE	1
9	SH50X230-R	CORNER SHROUD	CONSUMABLE	1
10	PR60X420-L	WEAR BAR	INITIAL FITMENT	1

TALON
TALON LOCKJAW LIP ASSEMBLY DRAWING
ASSEMBLY GENERAL ARRANGEMENT
N.DENNIS
SCALE: 1:20 A4
30/09/2014
LJL50X2720-680SS (R0) 1 0

TRIM REAR OF CORNER ADAPTOR TO SUIT LIP PLATE

WELD ROOT GAP 7.5 ± 0.2

NOTES:
1. PLATE MATERIAL TO BE 400 OR 450 GRADE WEAR PLATE STEEL.
2. REFER TO TALON WELDING PROCEDURE WPODS FOR DETAILS ON WELDING TALON PRODUCTS.
3. IT IS RECOMMENDED TO PROFILE THE LIP USING A CNC FLAME CUTTING MACHINE. DXF FILES FOR THE LIP PROFILE ARE AVAILABLE ON REQUEST.

DETAIL B SCALE 1:10

SECTION A-A SCALE 1:5

TALON
TALON LOCKJAW LIP ASSEMBLY DRAWING
DIMENSIONAL DETAILS
N.DENNIS
SCALE: 1:20 A4
30/09/2014
LJL50X2720-680SS (R0) 2 0

DISTRIBUTED BY



CALL 08 9093 3800